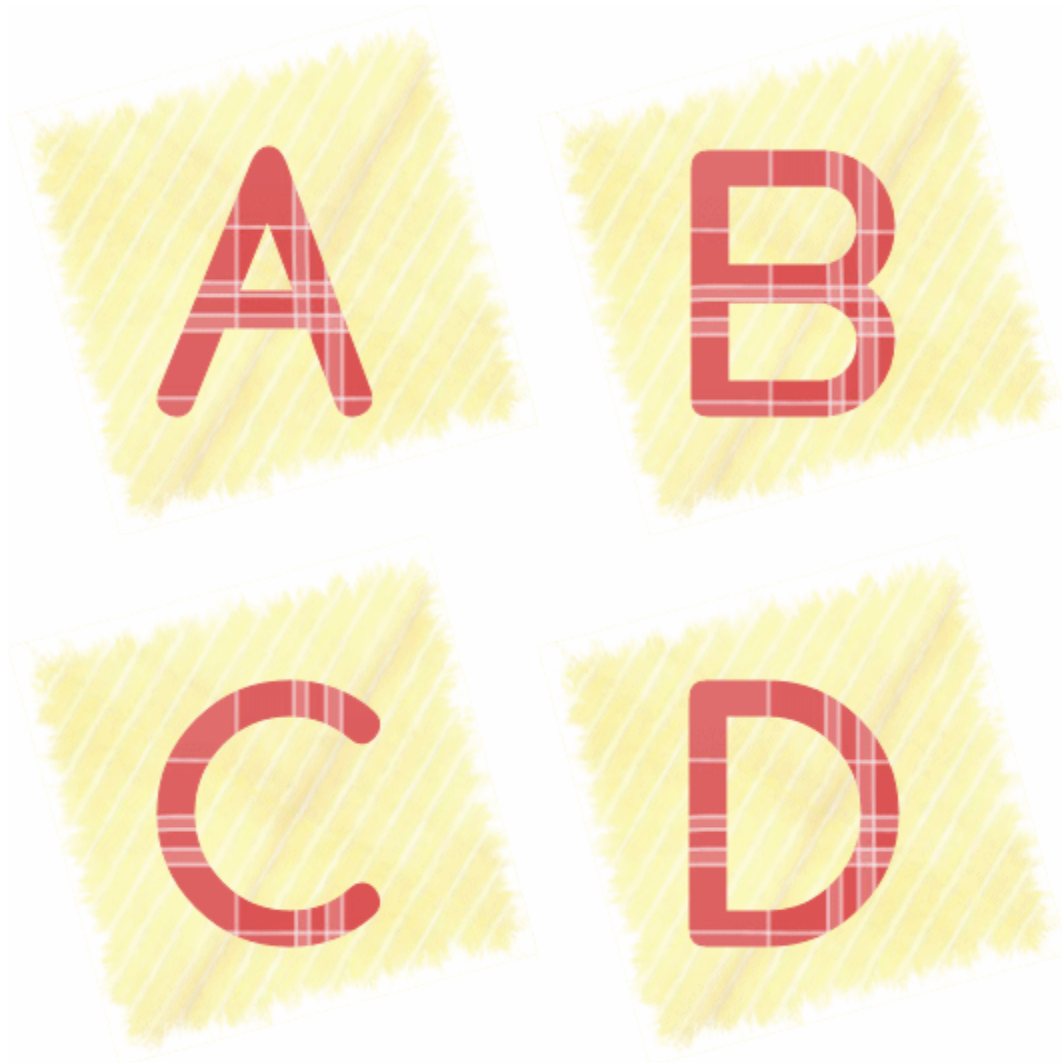
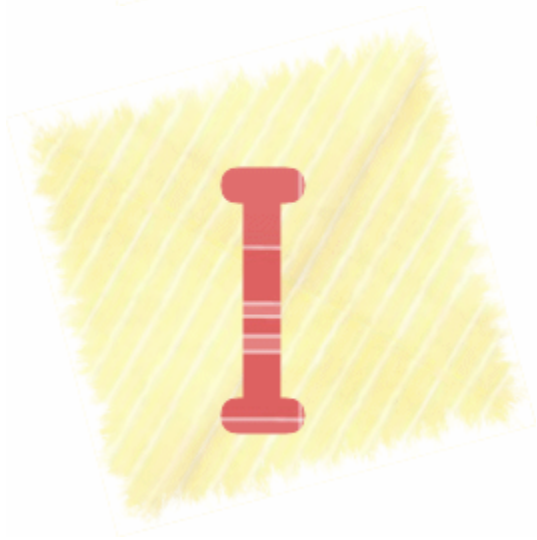
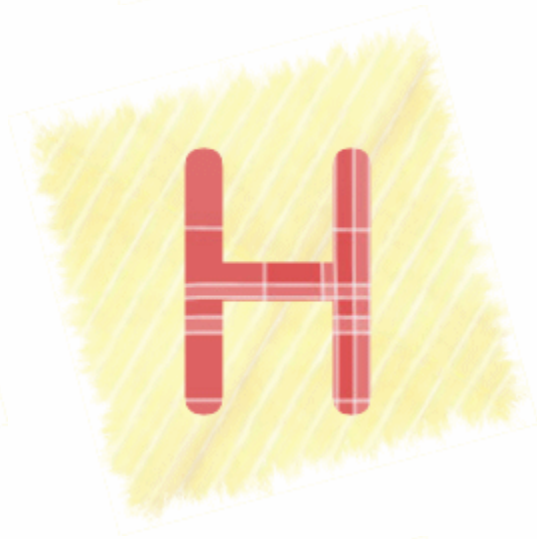


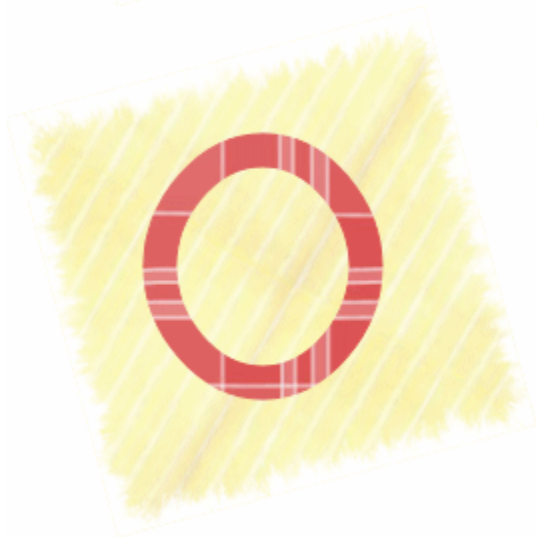
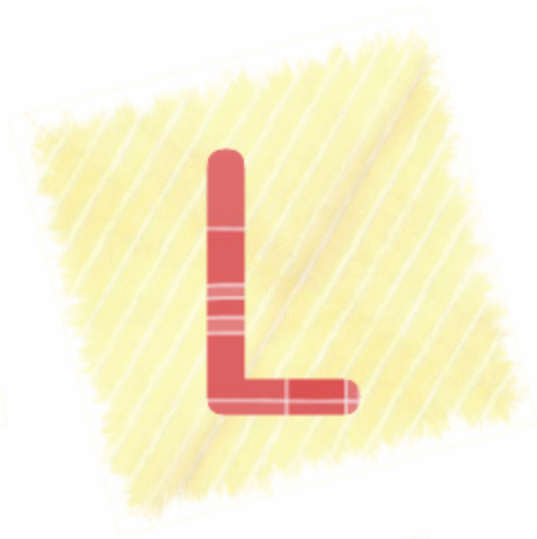
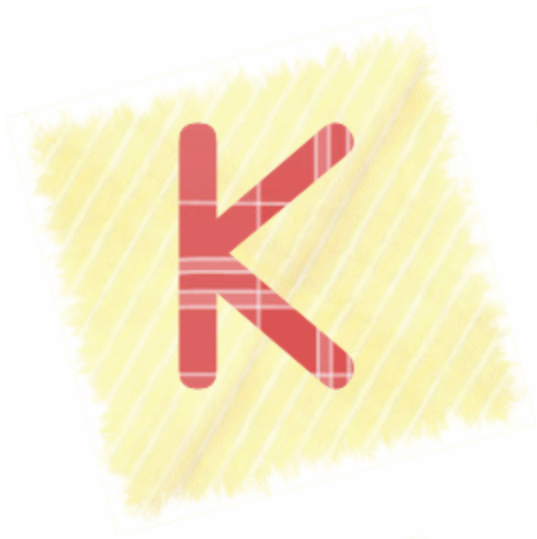
ABC Matching Cards (caps to lowercase)

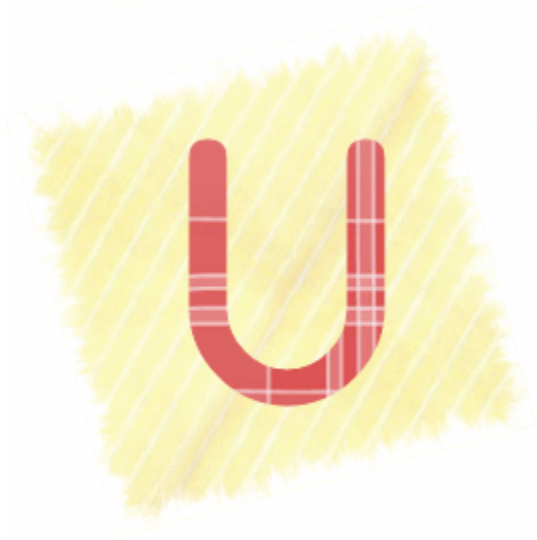
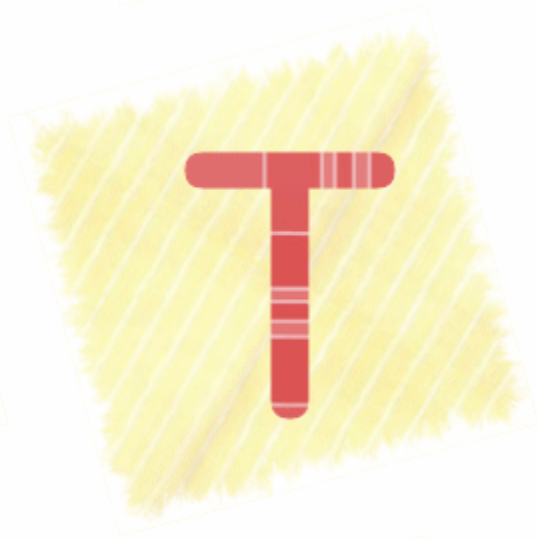
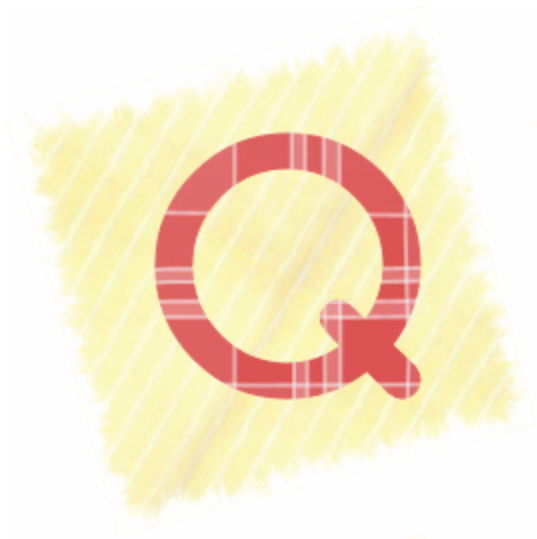
© thevirtualvine.com 2006

The frog cards are sized like 3x5 index cards to fit into purchased denim paper pockets. Cut out the yellow patches with the capital letters and glue them onto the denim pockets. Students then match the lowercase letters to the capital letters by sticking the frog cards into the correct denim pockets.

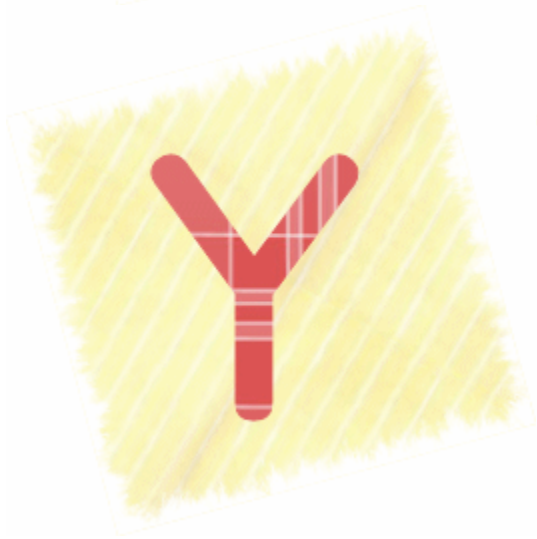














For label: Glue this  
card into denim  
pocket. Glue patch  
label onto pocket.  
Glue pocket to  
desired surface.

[thevirtualvine.com](http://thevirtualvine.com) 2006