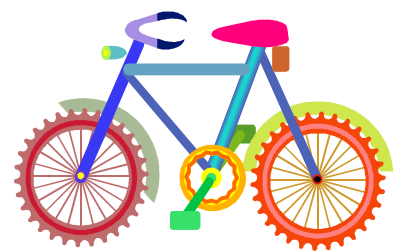
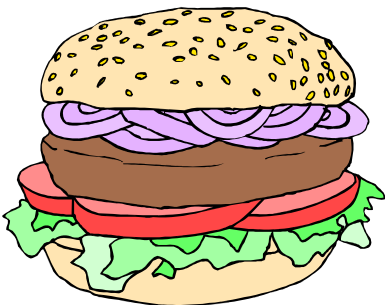
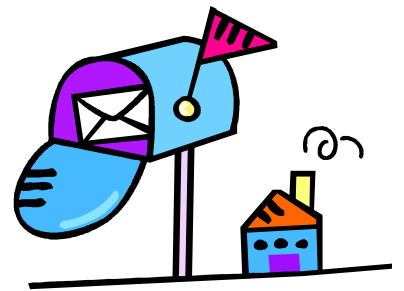
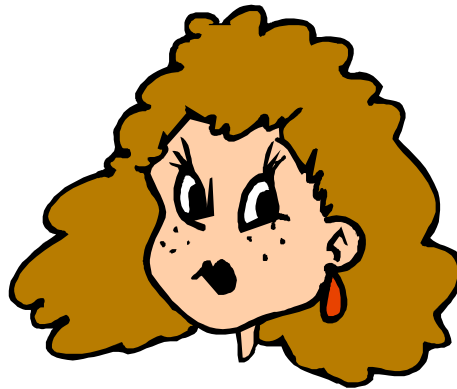
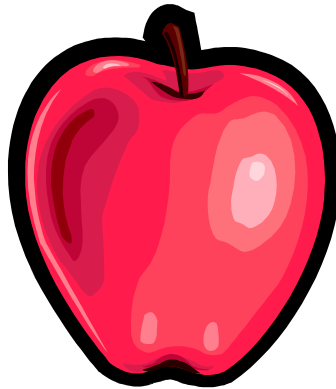
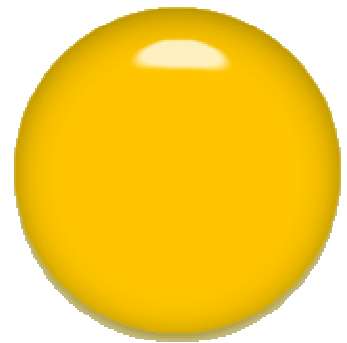
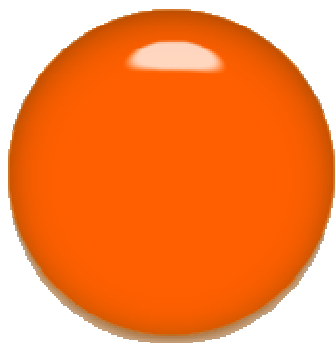
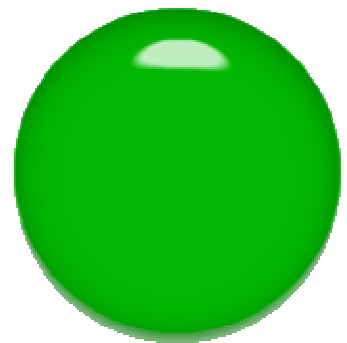
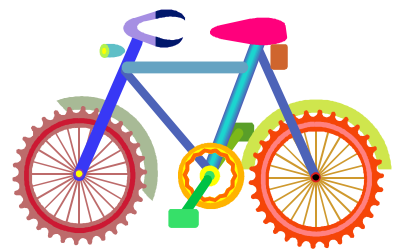
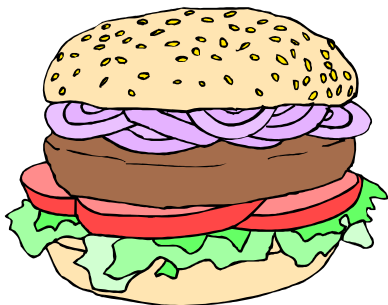
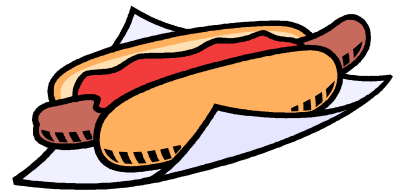
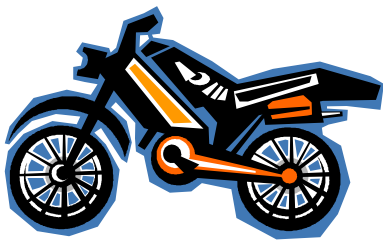
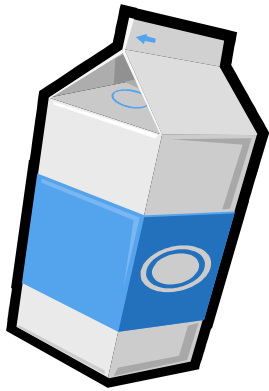


Mmmmmmm . . .



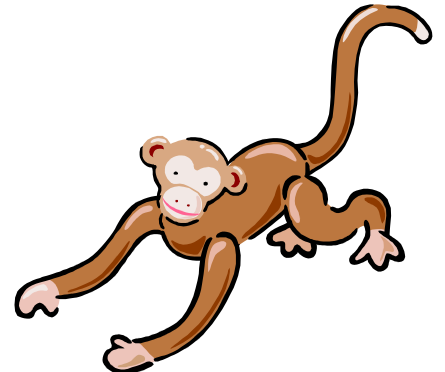
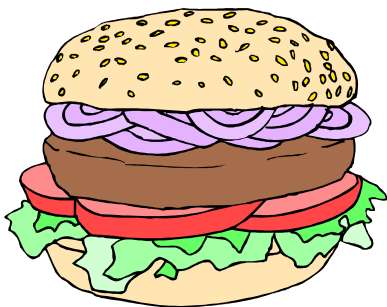
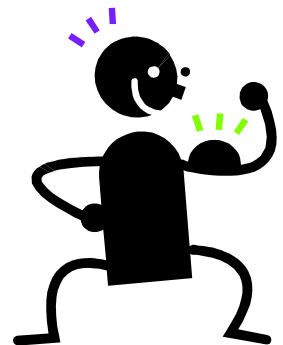
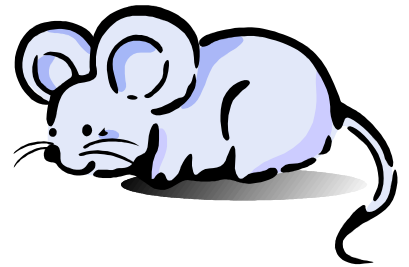
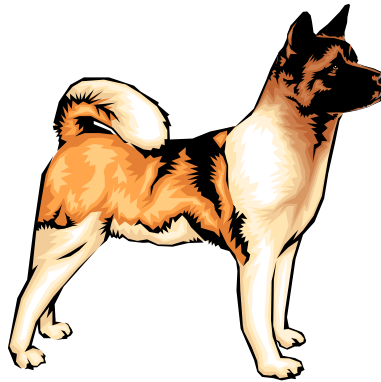
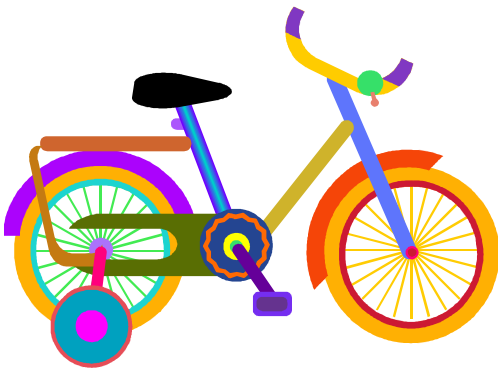
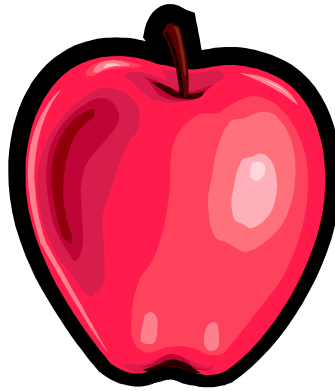


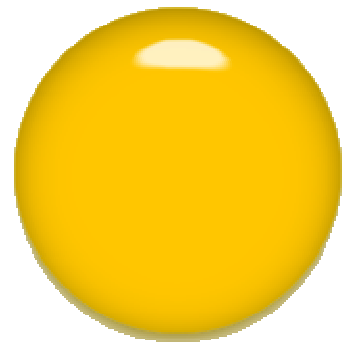
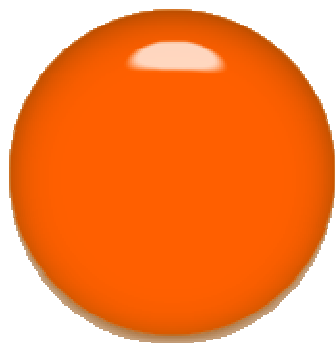
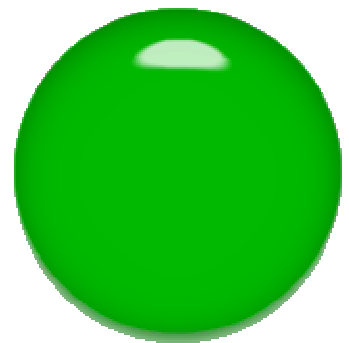
Mmmmmmm . . .



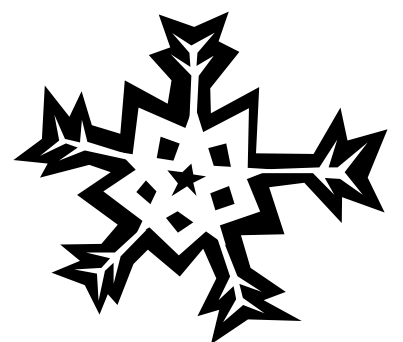
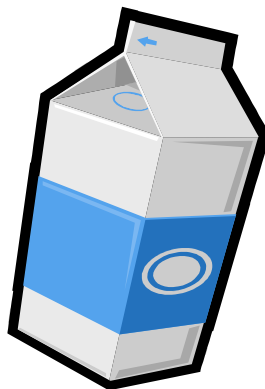
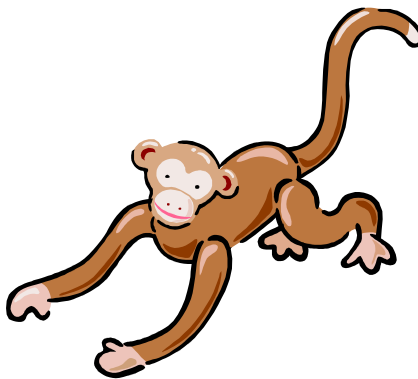
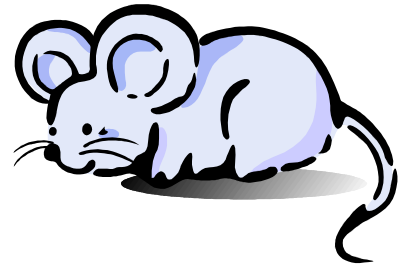
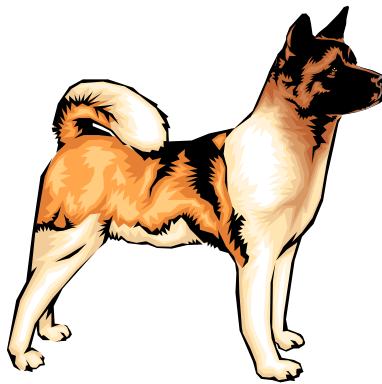
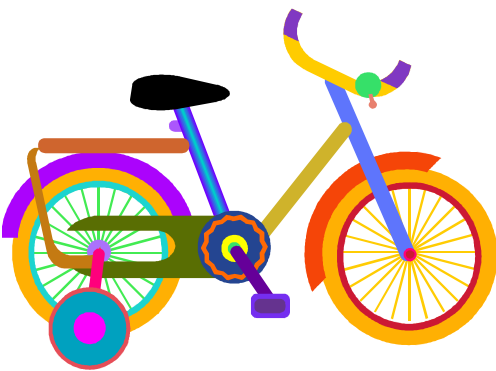
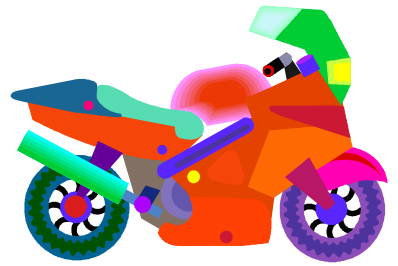
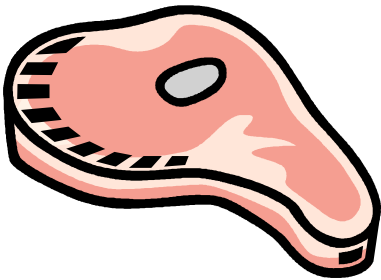


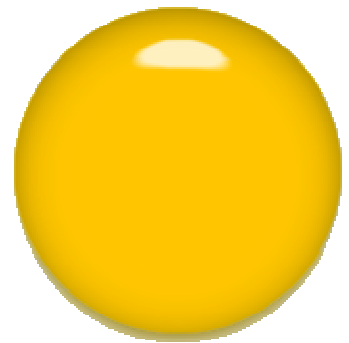
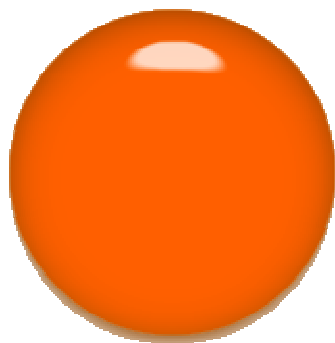
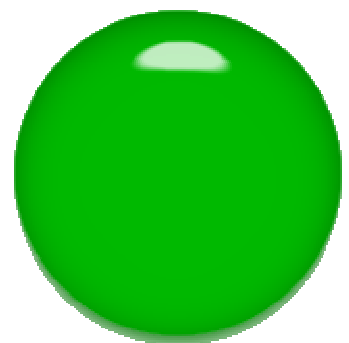
Mmmmmmm . . .





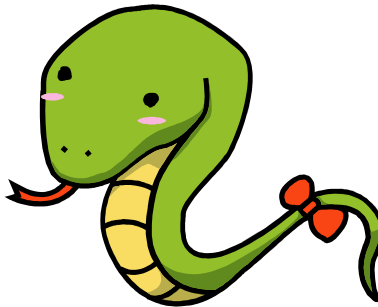
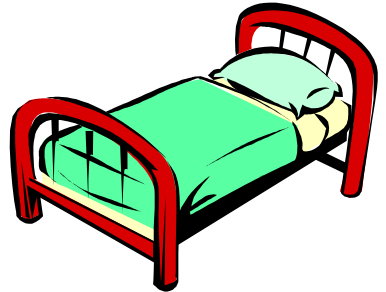
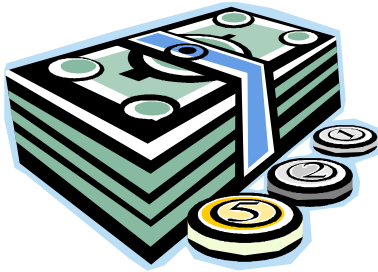
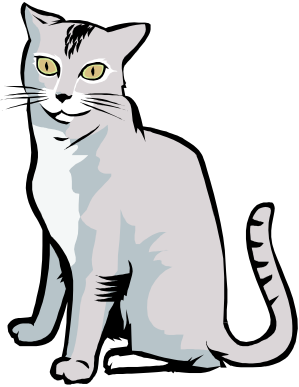
Mmmmmmm . . .







Mmmmmmm . . .







## M&Ms Mmmmmmm.... Game



( /m/ )

If the picture begins with /m/ cover it with an M&M with an "m". If it doesn't begin with /m/, cover it with an M&M without an "m".